

A Slice of S-L

Service-Learning Initiatives & Announcements

(April – Sep 2018)

NWCDC WeCare Fund Just for You



- **\$100,000** per year from 2018 – 2020
– the total amount available for staff/students to utilise for S-L and ComServe Projects
- **\$10,000**
– the cap for each project

Share & Learn at Brown-Bag Sessions



OSL's first 4 Brown Bag Sessions

4 presenters from 3 schools
50 NP attendees in total



Celestine Seet, HS



Javihn Chan, HMS



Neviliappan Shanmugam, LSCT



Jessie Tan, HS

Deeper & more customised training for you

3 new MasterClasses in May & June

Designed and conducted by our S-L consultant, Prof Bringle, together with OSL Master Trainers

More than 100 participants

(including some 25 from the other polys and ITE)



Community Engagement in S-L
(with a Partners Networking Session)



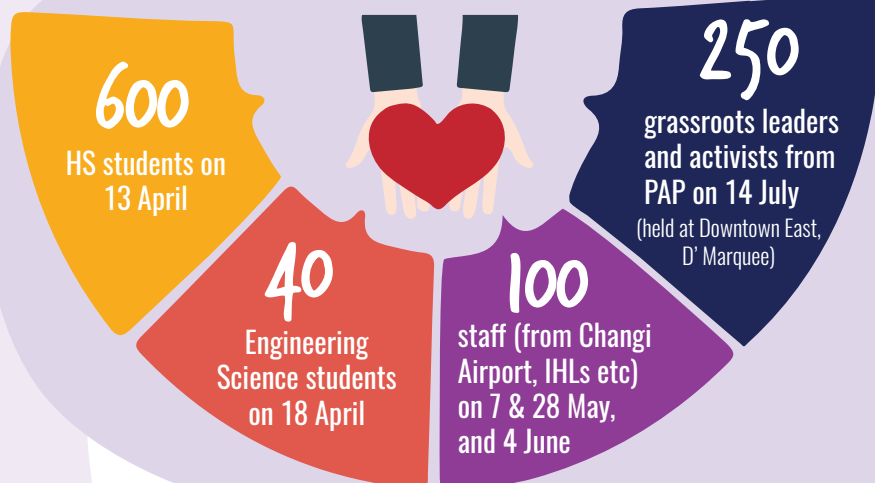
Deepening S-L in your course



Designing & implementing S-L effectively

Book DiD's Empathy Challenge

6 Rounds



Customised training in "Academic Service-Learning"



18 BA staff

27 ECE staff

26 ICT staff

- Held for 3 schools, in April and September
- 2-day training including an experiential activity with a community + an online learning component

Be part of student transformation



24

NP Staff signed up for OSL's call for Trip Leaders under the YEP Scaling Initiative (YSI)

